

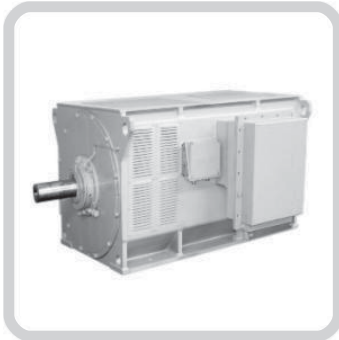
# Technical Information



## HIGH VOLTAGE INDUCTION MOTORS

PHV11EN

# HIGH VOLTAGE INDUCTION MOTORS CAGE ROTOR



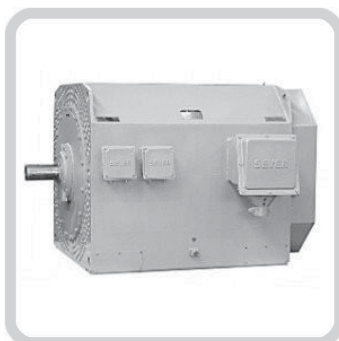
## DRIP-PROOF HV MOTOR cooling - IC 01

Standards: IEC 60034-1  
Rotor type: cage  
Frame Size: 355 - 710  
Voltage / frequency: 3 - 11 kV / 50 Hz, 60 Hz  
Output: 200 - 5000 kW at 6 kV / 50 Hz, 4 pole  
Number of poles: 2 - 12 poles  
Insulation class: F  
Mechanical protection: IP 23  
Cooling: IC 01  
Mounting arr.: IM B3, IM V1  
Fixing dimensions: IEC 60072  
Designation: 1.K0(F)



## HIGH VOLTAGE MOTORS cooling - IC 611 (air - air)

Standards: IEC 60034-1  
Rotor type: squirrel cage  
Frame Size: 355 - 710  
Voltage / frequency: 3 - 11 kV / 50 Hz, 60 Hz  
Output: 200 - 4000 kW at 6 kV / 50 Hz, 4 pole  
Number of poles: 2 - 12 poles  
Insulation class: F  
Mechanical protection: IP 54  
Cooling: IC 611  
Mounting arr.: IM B3, IM V1  
Fixing dimensions: IEC 60072  
Designation: 1.KZ(F)



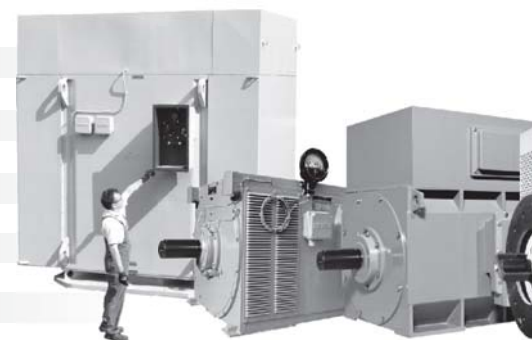
## HIGH VOLTAGE MOTORS cooling - IC 511 (air - air)

Standards: IEC 60034-1  
Rotor type: squirrel cage  
Frame Size: 355 - 710  
Voltage / frequency: 3 - 11 kV / 50 Hz, 60 Hz  
Output: 200 - 3000 kW at 6 kV / 50 Hz, 4 pole  
Number of poles: 2 - 12 poles  
Insulation class: F  
Mechanical protection: IP 54  
Cooling: IC 511  
Mounting arr.: IM B3, IM V1  
Fixing dimensions: IEC 60072  
Designations: KZ(F)N



## HIGH VOLTAGE MOTORS cooling - IC 81 W (air - water)

Standards: IEC 60034-1  
Rotor type: squirrel cage  
Frame Size: 355 - 710  
Voltage / frequency: 3 - 11 kV / 50 Hz, 60 Hz  
Output: 200 - 5000 kW at 6 kV / 50 Hz, 4 pole  
Number of poles: 2 - 12 poles  
Insulation class: F  
Mechanical protection: IP 54  
Cooling: IC 81 W  
Mounting arr.: IM B3, IM V1  
Fixing dimensions: IEC 60072  
Designation: 1.KV(F)



# HIGH VOLTAGE INDUCTION MOTORS WOUND ROTOR

## DRIP-PROOF HIGH VOLTAGE WOUND-ROTOR MOTORS cooling - IC 01

Standards: IEC 60034-1

Rotor type: wound-rotor (slip-ring)

Frame Size: 355 - 710

Voltage / frequency: 3 - 11 kV / 50 Hz, 60 Hz

Output: 200 - 5000 kW at 6 kV / 50 Hz, 4 pole

Number of poles: 2 - 12 poles

Insulation class: F

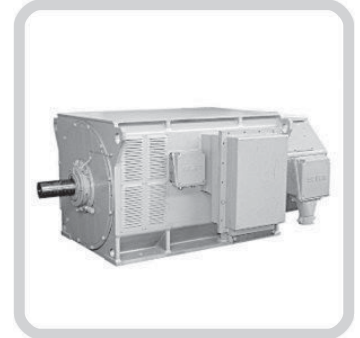
Mechanical protection: IP 23

Cooling: IC 01

Mounting arr.: IM B3, IM V1

Fixing dimensions: IEC 60072

Designation: 1.P0(F)



## HIGH VOLTAGE WOUND-ROTOR MOTORS cooling - IC 611 (air - air)

Standards: IEC 60034-1

Rotor type: wound-rotor (slip-ring)

Frame Size: 355 - 710

Voltage / frequency: 3 - 11 kV / 50 Hz, 60 Hz

Output: 200 - 4000 kW at 6 kV / 50 Hz, 4 pole

Number of poles: 2 - 12 poles

Insulation class: F

Mechanical protection: IP 54

Cooling: IC 611

Mounting arr.: IM B3, IM V1

Fixing dimensions: IEC 60072

Designation: 1.PZ(F)



## HIGH VOLTAGE WOUND-ROTOR MOTORS cooling - IC 511 (air - air)

Standards: IEC 60034-1

Rotor type: wound-rotor (slip-ring)

Frame Size: 355 - 710

Voltage / frequency: 3 - 11 kV / 50 Hz, 60 Hz

Output: 200 - 3000 kW at 6 kV / 50 Hz, 4 pole

Number of poles: 2 - 12 poles

Insulation class: F

Mechanical protection: IP 54

Cooling: IC 511

Mounting arr.: IM B3, IM V1

Fixing dimensions: IEC 60072

Designations: ZP(FN)



## HIGH VOLTAGE WOUND-ROTOR MOTORS cooling - IC 81 W (air - water)

Standards: IEC 60034-1

Rotor type: wound-rotor (slip-ring)

Frame Size: 355 - 710

Voltage / frequency: 3 - 11 kV / 50 Hz, 60 Hz

Output: 200 - 5000 kW at 6 kV / 50 Hz, 4 pole

Number of poles: 2 - 12 poles

Insulation class: F

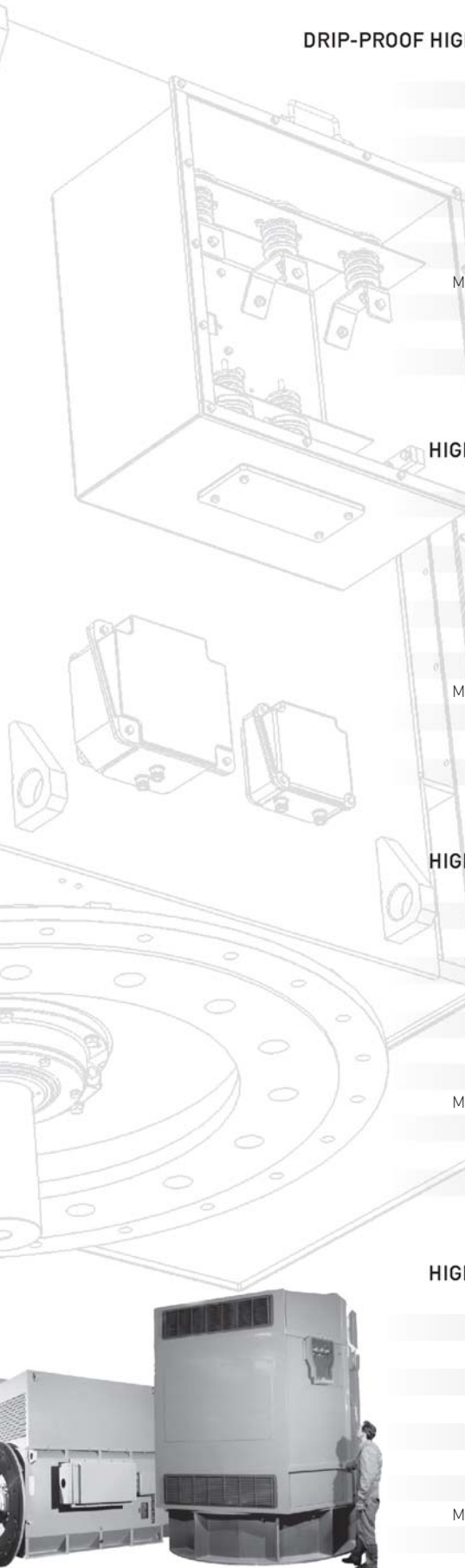
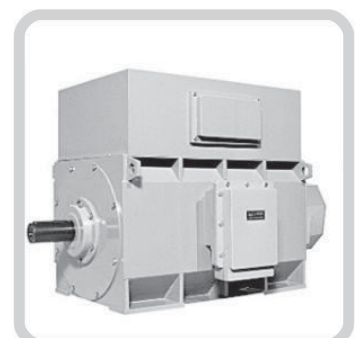
Mechanical protection: IP 54

Cooling: IC 81 W

Mounting arr.: IM B3, IM V1

Fixing dimensions: IEC 60072

Designation: 1.PV(F)



**ATB SEVER DOO SUBOTICA**

Magnetna polja 6

24 000 Subotica

Serbia

Tel. +381 24 665 124

Fax +381 24 665 125

[www.atb-motors.com](http://www.atb-motors.com)

[sever@rs.atb-motors.com](mailto:sever@rs.atb-motors.com)